


# SVB SURFACE

USER DOCUMENTATION

[info@svbgroup.com.au](mailto:info@svbgroup.com.au)



## Contents

1.	Welcome to SVB Surface.....	2
2.	Familiarity with the interface.....	2
3.	Licensing and registration requirements .....	2
4.	SVB Surface ribbon explained .....	4
5.	Measure Explained.....	5
6.	Table of Content explained.....	7
a.	Opacity (or Transparency) Control explained .....	9
b.	Layer Function explained .....	9
i.	L – Label .....	10
ii.	 - Lightbulb .....	11
iii.	Diagram .....	11
iv.	Colour Settings .....	14
c.	Layer Deletion .....	16
d.	Copy legend.....	16
7.	Analyse data.....	17
8.	Display Refresh.....	17
9.	Pan/Navigate.....	18
10.	Select data by point line polygon or buffer .....	18
11.	Print using SVB Mapper .....	20

## 1. Welcome to SVB Surface

This user documentation is written to assist you to use the full features of SVB Surface™. A comprehensive mapping add-in to Microsoft Excel® for office 2010 and 2013 on Windows OS environments and has been tested to work on 32 and 64 bit systems.

You can use it with the full features of Excel® and also have complex analysis and visual representation of your map data associated with it.

## 2. Familiarity with the interface

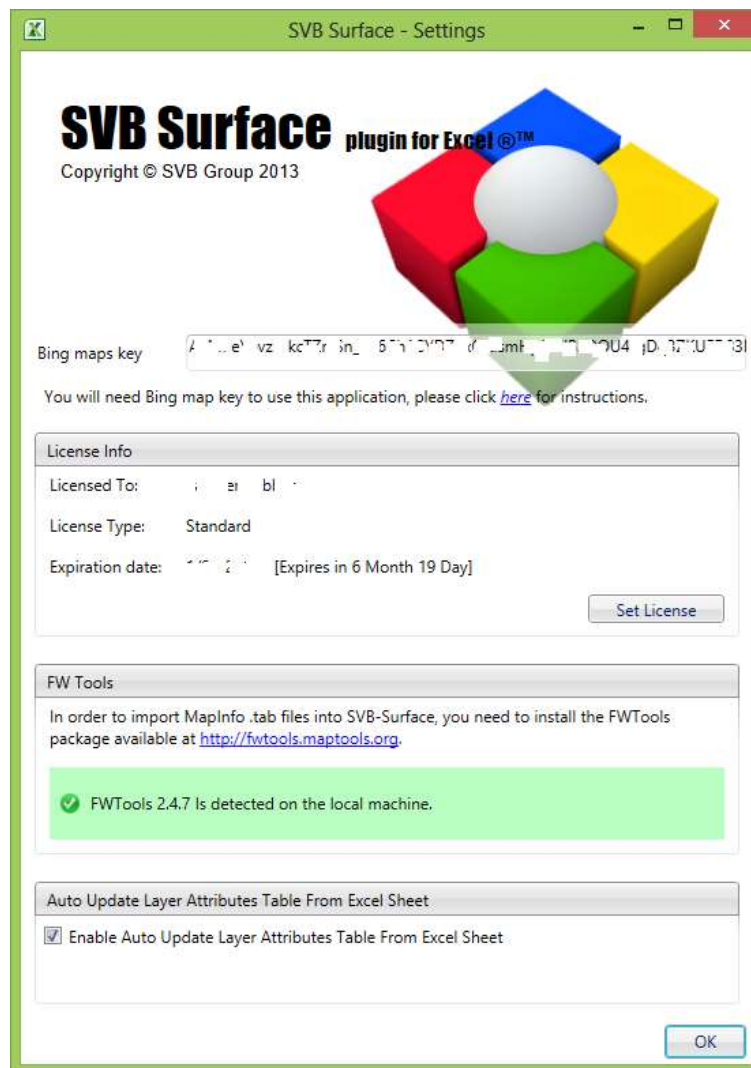


Upon successfully installing the COM add-in, it shows up in the menu bar of Microsoft Excel® with its own ribbon on the interface.

## 3. Licensing and registration requirements



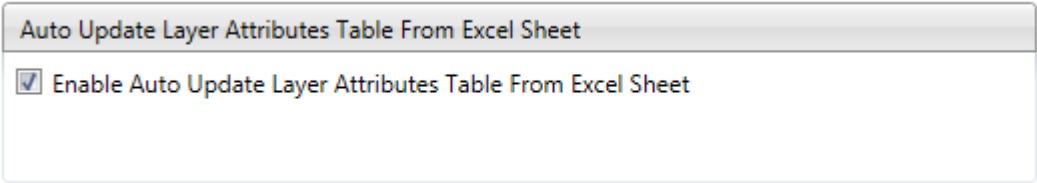
Clicking on Settings will open the settings interface.



The “Set license” interface will walk you through the process of purchasing a licence or procuring a trial licence. You will need Bing key to be able to display the data on Bing Maps (Bing is the primary display engine) with SVB Surface.

Copy and paste the Bing key in the space provided. Simple and easy to follow instructions are provided in the pdf document available at SVB Surface™ website.

**SVB Surface works with Esri’s shapefile, MapInfo’s TAB and Google’s KML format in geographic coordinates to represent map data within Microsoft excel, which you can Map and Analyse at the same time. For using MapInfo fwtools will be needed which can be downloaded and installed. The settings interface checks if it is present on your computer.**



Use the “**Enable Auto Update Layer Attributes table from Excel Sheet**” option if you are using less number of records and less number of data sets and want to keep the tables and map in constant sync. Large datasets it may take considerable time for refresh after every change in Excel sheets.

## 4. SVB Surface ribbon explained



Show and hide map control, toggles the display of the map. Your data from multiple sheets can be displayed on this map.



This show and hide layer control, toggles the display of table of contents on the map.



This button adds data using an easy to use windows interface.



You can capture the screen from the menu. You can then include the map in any of your favourite software that allows pasting of copied images.

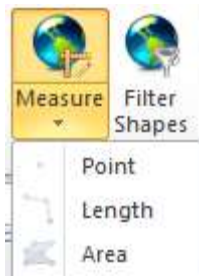
All the images are produced without any hidden objects or watermarks. This is Including our trial versions.



Helps identifying a feature at any location. It can also perform a drilldown if multiple datasets are used at a location.



Allows you to select the features by drawing a point, line, polygon or buffer.



Provides you with the coordinates of a point, length between a set of points or polyline and an area of a polygon.



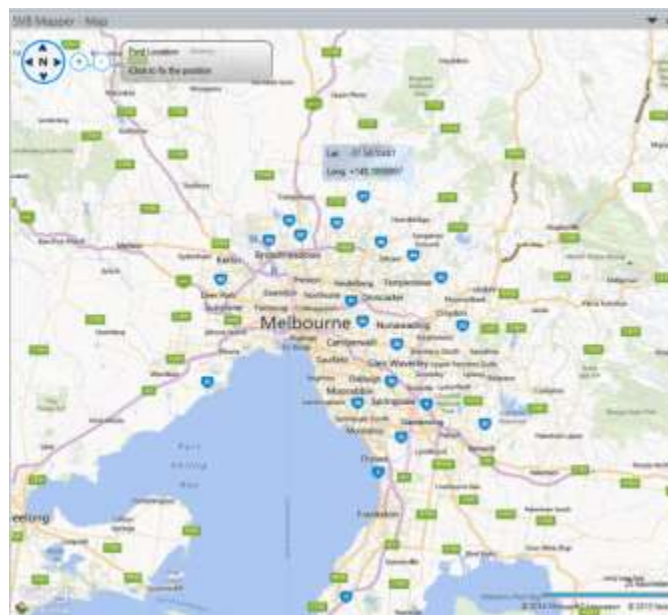
If you perform selection in Microsoft Excel®, you can then display the selected set of features within the map.



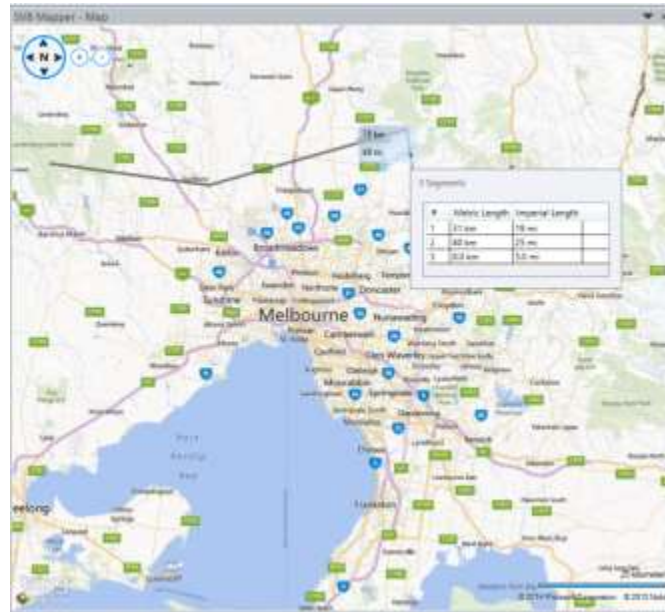
Helps with the licensing and management of Bing Keys.

## 5. Measure Explained

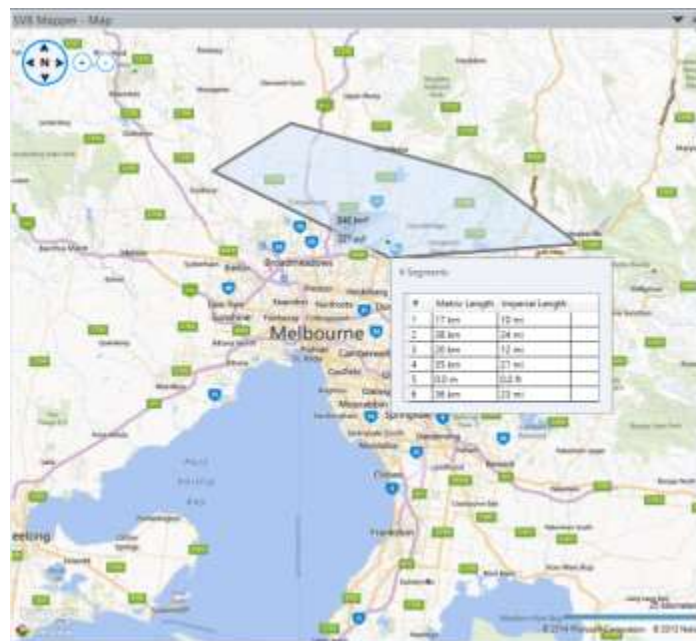
You can measure point, line (length) and polygon (area) using the measure tool. The tool also shows you segment length.



Measure Point



Measure Line



Measure Polygon



## 6. Table of Content explained

The following is table of content control that is displayed (toggle on/off) when you click layers show/hide button.

It has four main areas.







The screenshot shows the 'SVB Surface - Controls' window. At the top, there is an 'Opacity' control set to 0%. Below this is a list of layers, with 'melbourneincome' selected. To the right of the layer name is a lightbulb icon. Below the layer list is a trash can icon. At the bottom of the panel is a legend icon. Red lines connect these elements to labels on the right: 'Transparency Control' points to the opacity input, 'Layer Control' points to the lightbulb icon, 'Selected layer Deletion' points to the trash can icon, and 'Copy Legend' points to the legend icon.

SVB Surface - Controls

Opacity 0%

Transparency Control

melbourneincome L

Layer Control

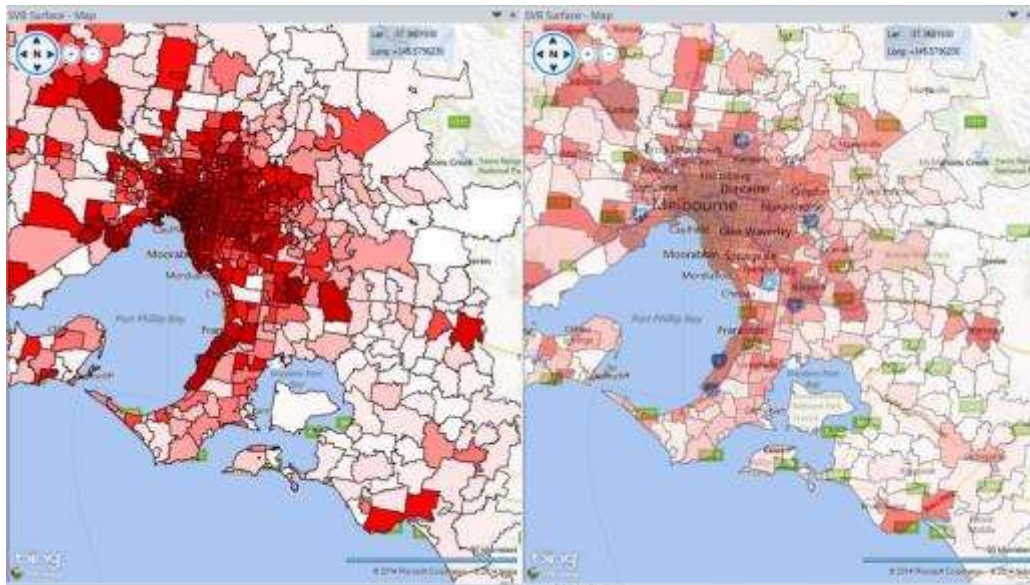
Selected layer Deletion

Copy Legend

## a. Opacity (or Transparency) Control explained



You may be working with a large number of excel sheets and mapping the data to perform comparative analysis. At times you superimpose maps on top of other pins. They end up masking the data underneath and the visual assessment gets impaired. To resolve this SVB Surface comes with **Opacity Control**. This control allows you to control the Opacity (or Transparency) of a layer between 0 and 100%



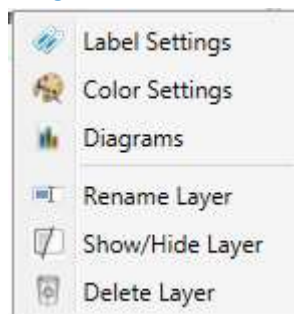
Images 100% opacity and 50% opacity compared

## b. Layer Function explained

It comprises of further options of Label and display.



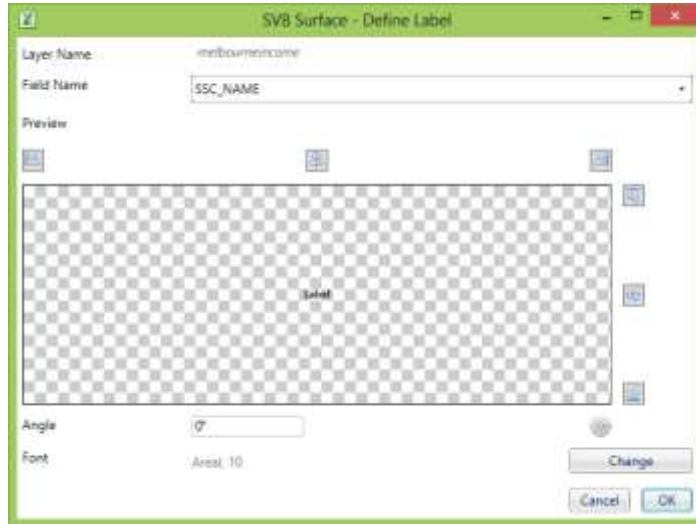
Options of Label Settings, Color, Diagrams, Rename, Show/Hide and Delete are available by



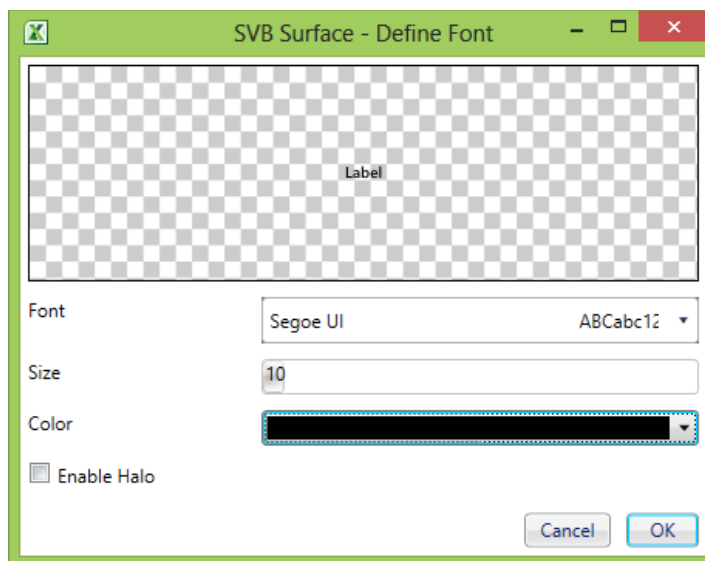
right clicking layer control

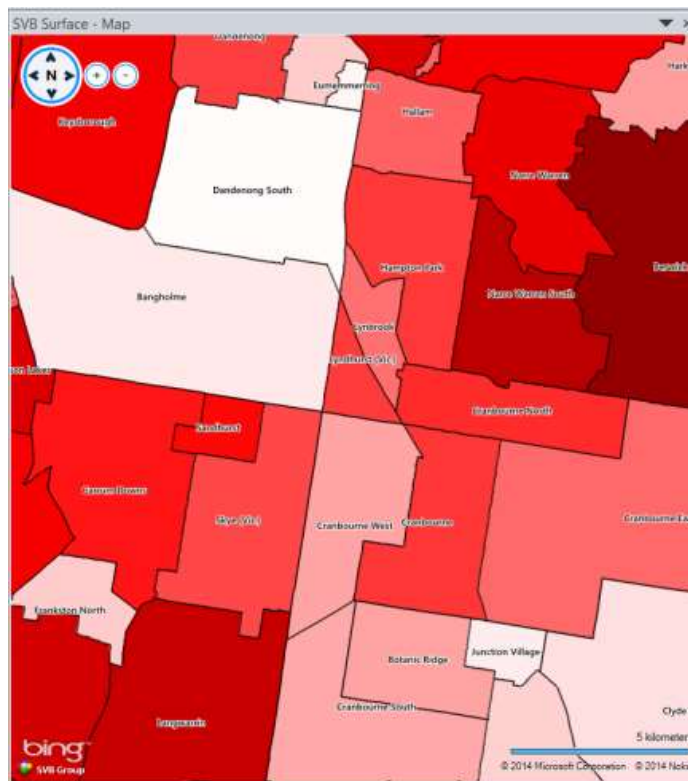
### i. L – Label

This option allows you to label the map using a particular field. Accessible by right clicking the layer you can seek comprehensive labelling options.



You can label the map using field names, it allows you to change the angle of the label, font, size and halo with colour of label and halo both being flexible.





**ii.  - Lightbulb**

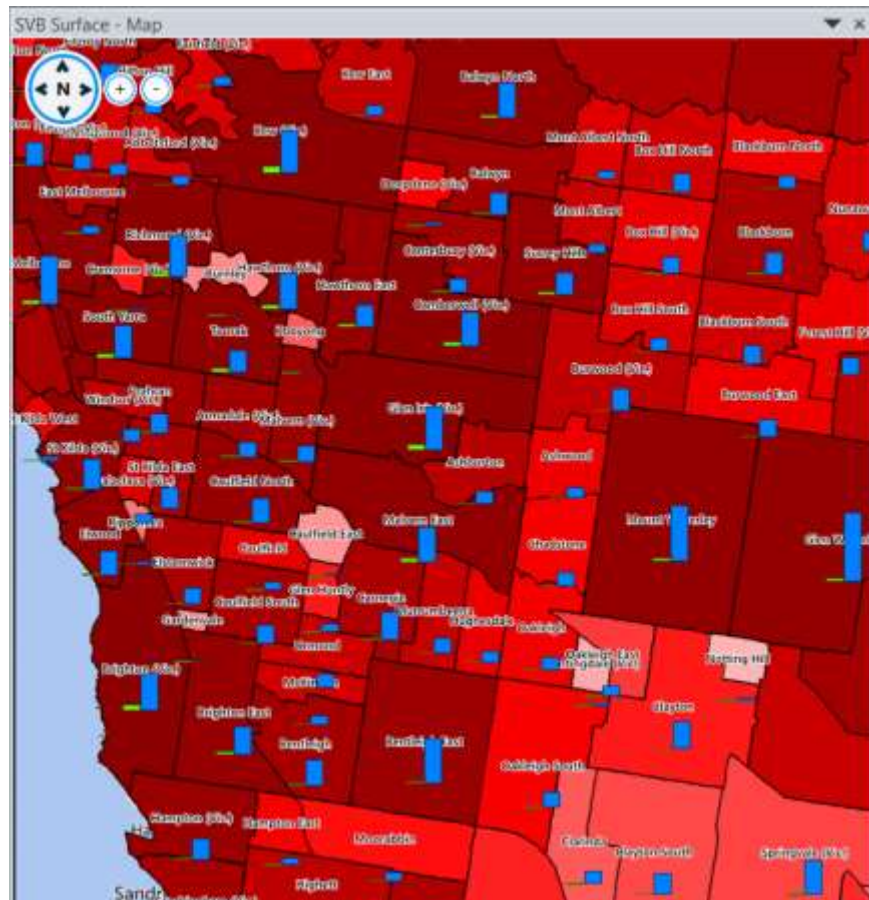
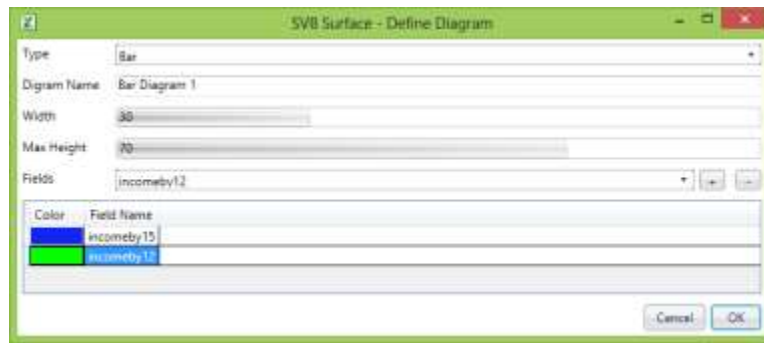
This is to turn the display of a layer on or off

**iii. Diagram**

You can use diagram - Bar charts, Pie Charts and overlay text to be displayed on the map to represent attribute data. The size of the diagrams can be set between minimum and maximum thresholds and the colour based on a different field.

Right clicking and selecting diagram on the layer name in the table of contents allows you to choose the option.

**BAR**



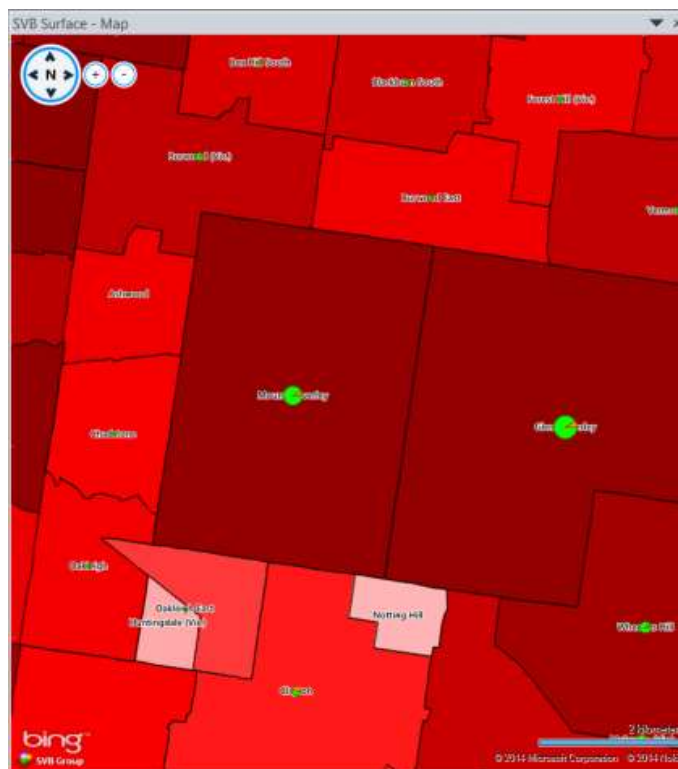
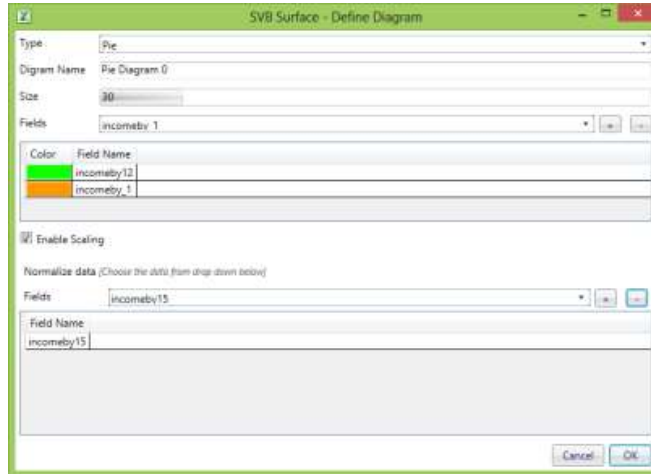
Adding a diagram (Bar, Pie or Text) also adds an item in the Table of Contents



This allows you to manage the display, edit or delete the bar diagram.

## PIE

When creating a pie diagram you can follow the same approach and create different segments of pie using different fields. However you can normalise the diameter of PIE using a field or set of fields.

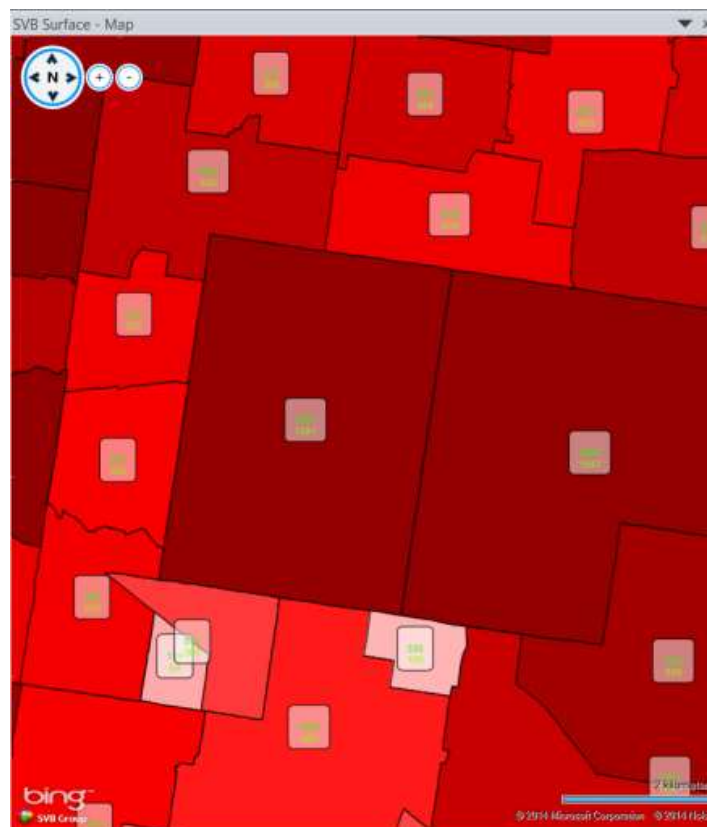
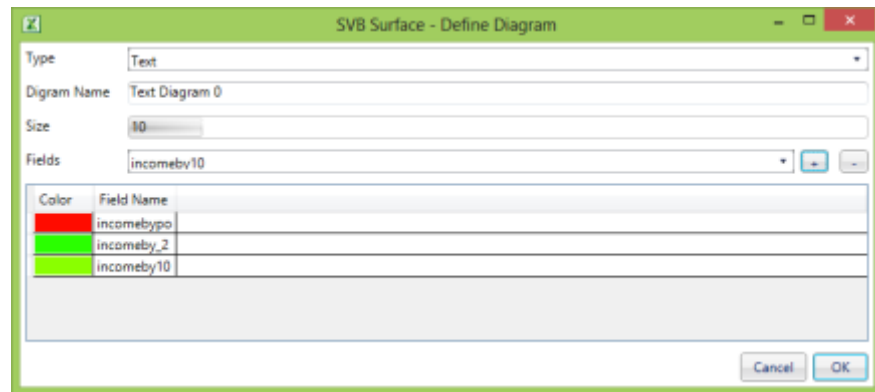


In the above example, the diameter normalised represents the total population and the red sector of the PIE represents the high income groups. Field names have been changed in order to mask actual data.

## TEXT DIAGRAM

When you have multiple fields and you want to display attributes from more than one for each feature, stacked labels is the best option. Text diagram allows you to achieve this.

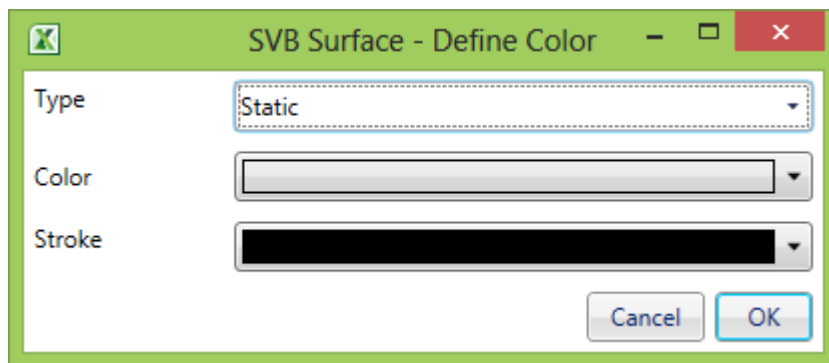




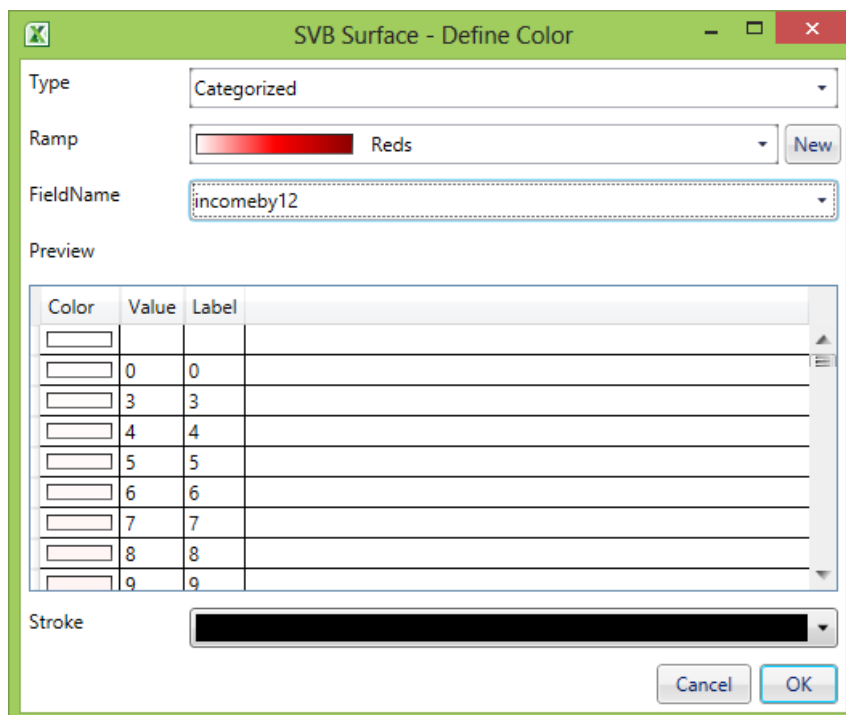
#### iv. Colour Settings

The colour of areas can be drawn by values in a field (column). You can choose

-STATIC: All features are drawn in same colour and stroke defines outline.



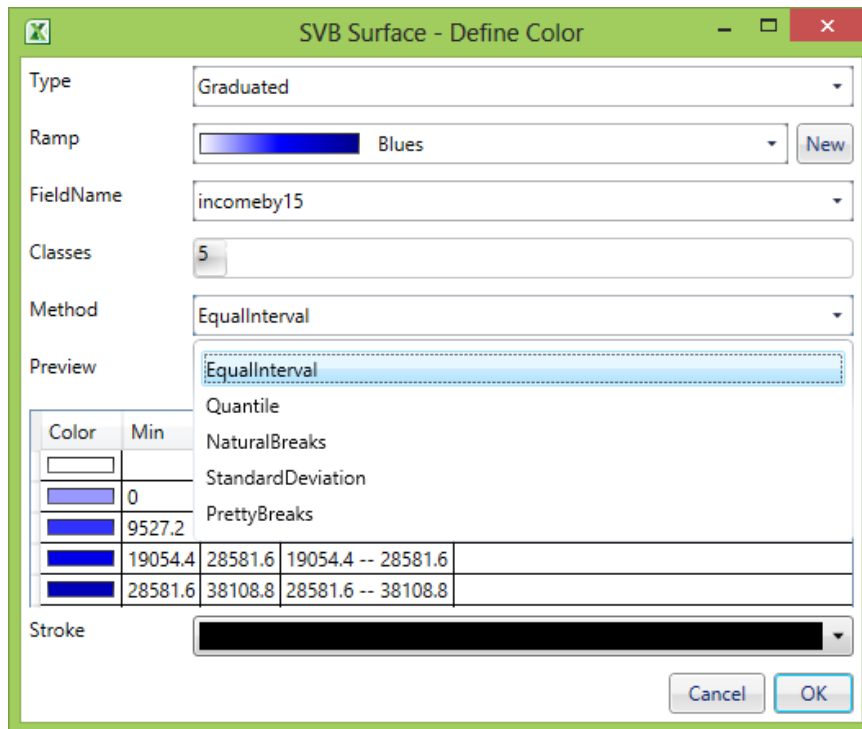
-CATEGORISED: All features are drawn in same colour ramp. You can define your own ramp. The intensity varies based on the value in the selected field



-GRADUATED: All features are segmented on

- a. Equal Interval,
- b. Quantile,
- c. Natural Breaks,
- d. Standard Deviation
- e. Pretty Breaks.





Segmenting the data in conjunction with diagrams easily exposes the trends not normally visible.

### c. Layer Deletion



Whether you have processed and analysed the data or you want to reduce the number of layers in the table of contents. There may be a situation when you do not want to deal with all the layers available. You can highlight the layer in layer table of contents and press delete button and the layer will be deleted.

### d. Copy legend



Layer Name

	3067
	3002
	3000
	3101
	2150
	3139
	2000
	8005
	3161
	3128
	3053
	3122
	06851

If you are using drawings across many layers, it can quickly get very confusing on what colour of which layer represents what on the ground. To simplify this we have given a handy functionality of copying the Legend by the click of a button and pasting it on a document. An example of the same is shown above.

## 7. Analyse data

The best part of SVB Surface™ is you can continue to use Microsoft Excel® for analysis normally with the additional functionality available via the add in.

## 8. Display Refresh



You can control display refresh of large volume of data via filter shapes over the data that you have selected or subset in excel so that your display is in sync with data. You can also see the percent completion of display on the top right of map display (it is only visible when map is being refreshed)



## 9. Pan/Navigate

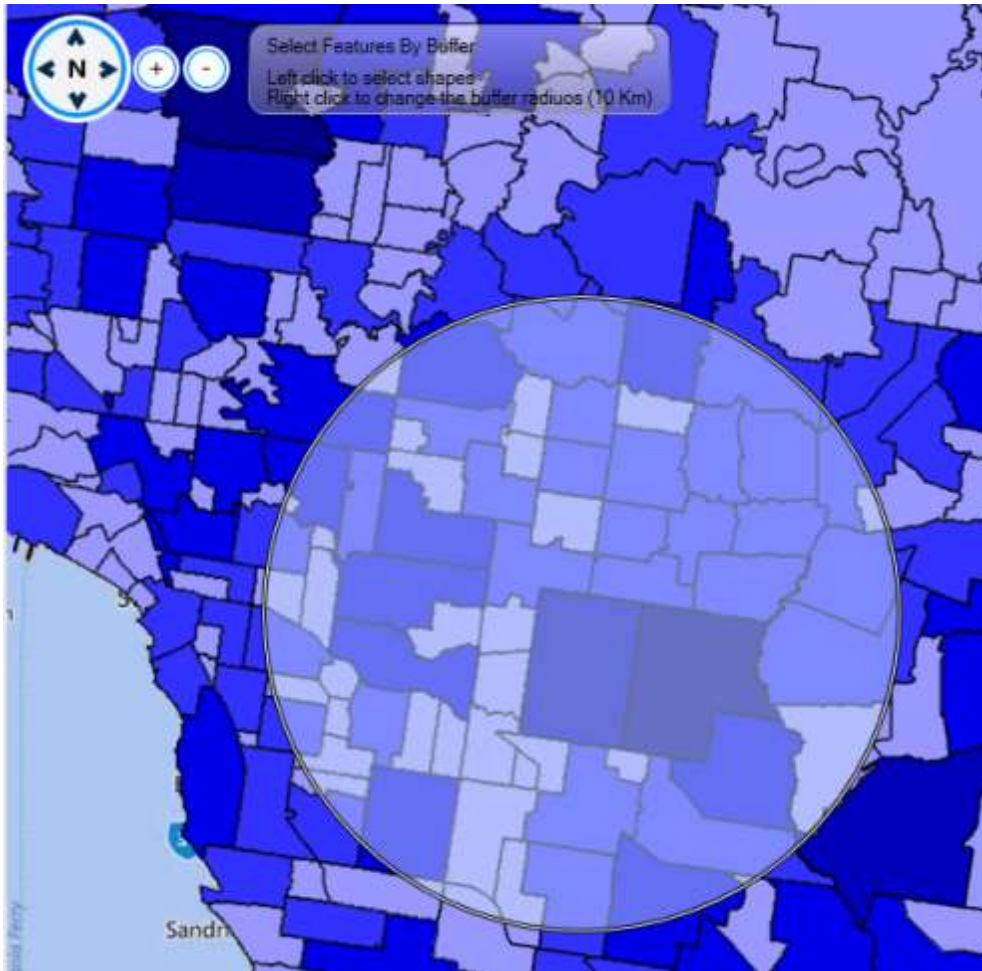
The map pan and zoom functions are available as a standard.



## 10. Select data by point line polygon or buffer

You can select the data by point, line polygon or buffer. If you are not using point; upon double clicking, the process of selection completes and a window is displayed showing selected set of features from each layer that is at selection.

You can use this data within excel or other application for further statistical analysis.



Above example shows how to select by drawing a buffer around a point. The details for buffer set up show when you right click. You can set the buffer distance in kilometres or miles.

Enter new value for buffer radius

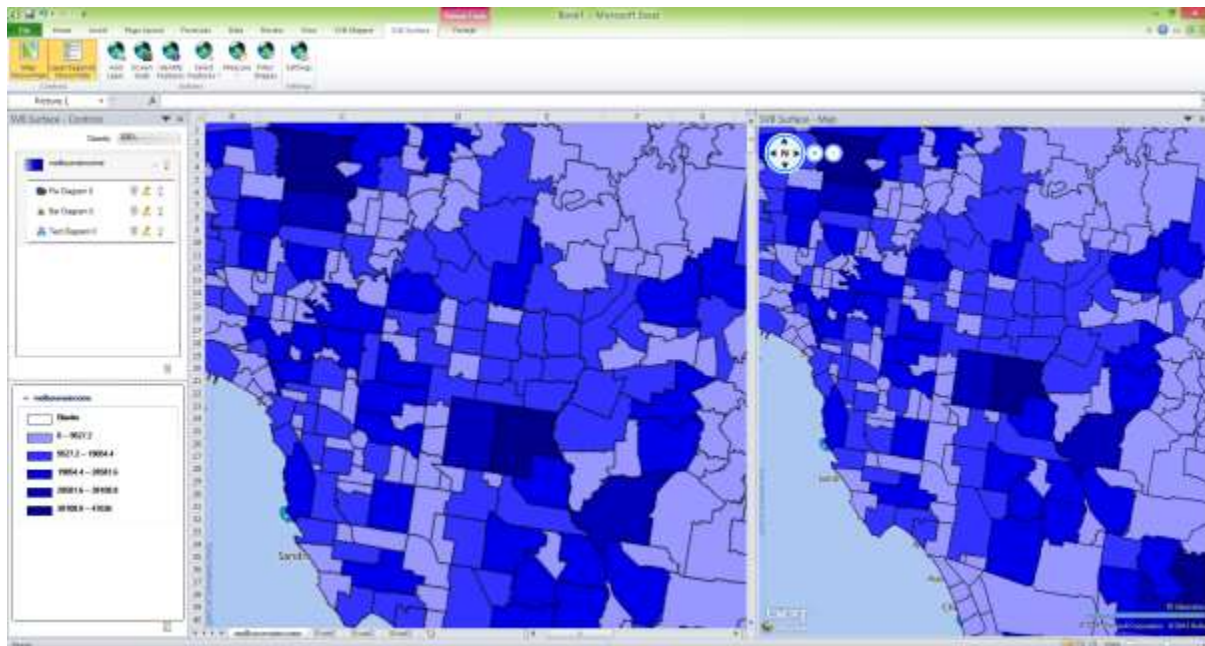
Km ▾  
Cancel OK



SVBJEC_NUMBER	SSCCODE	SSCNAME	STATE
6	SSC20015	Alphington	2
18	SSC20035	Ashburton	2
19	SSC20036	Ashwood	2
34	SSC20066	Balwyn	2
35	SSC20067	Balwyn North	2
67	SSC20142	Blackburn	2
69	SSC20144	Blackburn South	2
77	SSC20168	Box Hill (Vic.)	2
78	SSC20169	Box Hill North	2
79	SSC20170	Box Hill South	2
101	SSC20217	Burriley	2
104	SSC20222	Burwood (Vic.)	2
105	SSC20223	Burwood East	2
109	SSC20237	Camberwell (Vic.)	2
112	SSC20245	Canterbury (Vic.)	2
131	SSC20279	Chadstone	2
140	SSC20296	Clayton	2
184	SSC20379	Deedene (Vic.)	2

## 11. Print using SVB Mapper

You can use screen capture button to capture and include the map in any of your favourite programs. All images are generated without any hidden objects or watermarks. You can generate unlimited images including in the trial versions.





SVB SURFACE

[info@svbgroup.com.au](mailto:info@svbgroup.com.au)